

Technical data

Pump name **SWT 200 M**

Customer	Date 29-May-2019	Company
Contact	Item no.	Issued by
Phone	Project	Phone
E-mail	Project ID	E-mail

Requested data

1	Pump type	CENTRIFUGAL PUMPS FOR POOLS	Fluid	Water, clean
2	Number of pumps / Reserve	1 / 0	Liquid temperature	K 293
3	Flow	m ³ /h 18	Kin. viscosity	mm ² /s 1
4	Head	m 15.2	Vapour pressure	kPa 2.2
5	Static head	m 0	PH value	7
6	Inlet pressure	kPa 10	Density	kg/m ³ 1000
7	Available system NPSH	0	Solids	Weight % 0
8	Environmental temperature	K 290		

Pump

9	Pump name	SWT 200 M	Frequency	Hz 50
10	Design	CENTRIFUGAL PUMPS FOR POOLS	Installation type	STANDARD
11	Manufacturer	EPE	Impeller	Max. mm 0
12	Speed	1/min 2900	Diameter	Designed mm 0
13	No. of Stage	1		Min. mm 0
14	Connection Suction side	Female thread 2" (Kit PVC ?63 included)	Flow	Operating m ³ /h 18
15	Connection Discharge side	Female thread 2" (Kit PVC ?63 included)		Max- m ³ /h 29
16	Max Working Pressure	kPa		Min- m ³ /h 0.96
17	Shut-off head	kPa 191.71	Head	Operating m 15.2
18	Total weight	kg See the table of "Dimensions".		- (Qmax.) m 4.3
19	Shaft power	kW 1.11		- (Qmin.) m 19.8
20	Max. fluid temperature	K 40	Max. Shaft Power at max. impeller	kW 1.63
21	Required NPSH	m 3.5	Efficiency	% 71.1

Materials

22	Pump body	Poly propylene reinforced with glass fibre	Opening key	Poly propylene reinforced with glass fibre
23	Pump Body Lid	Poly propylene reinforced with glass fibre		
24	Diffuser	Poly propylene reinforced with glass fibre		
25	Impeller	Noryl		
26	Mechanicals seal	Carbon / Ceramic / Stainless Steel AISI 316		
27	Shaft	Stainless Steel AISI 316		

Motor

28	Manufacturer	EPE Standard	Insulation class	F
29	Type	SWT 200 M_230_Single Phase	Phases	1~
30	Specific design	- / 50 Hz / Pole pairs 1	Frame size	
31	Rated power	kW 1.5	Weight	kg 0
32	Number of poles	2	Electric voltage	V 230
33	Speed	1/min 2900	Electric current	A 9.2
34	Degree of protection	IP 55		
35				

Remarks

Performance curve

Pump name **SWT 200 M**

Customer	Date 29-May-2019	Company
Contact	Item no.	Issued by
Phone	Project	Phone
E-mail	Project ID	E-mail

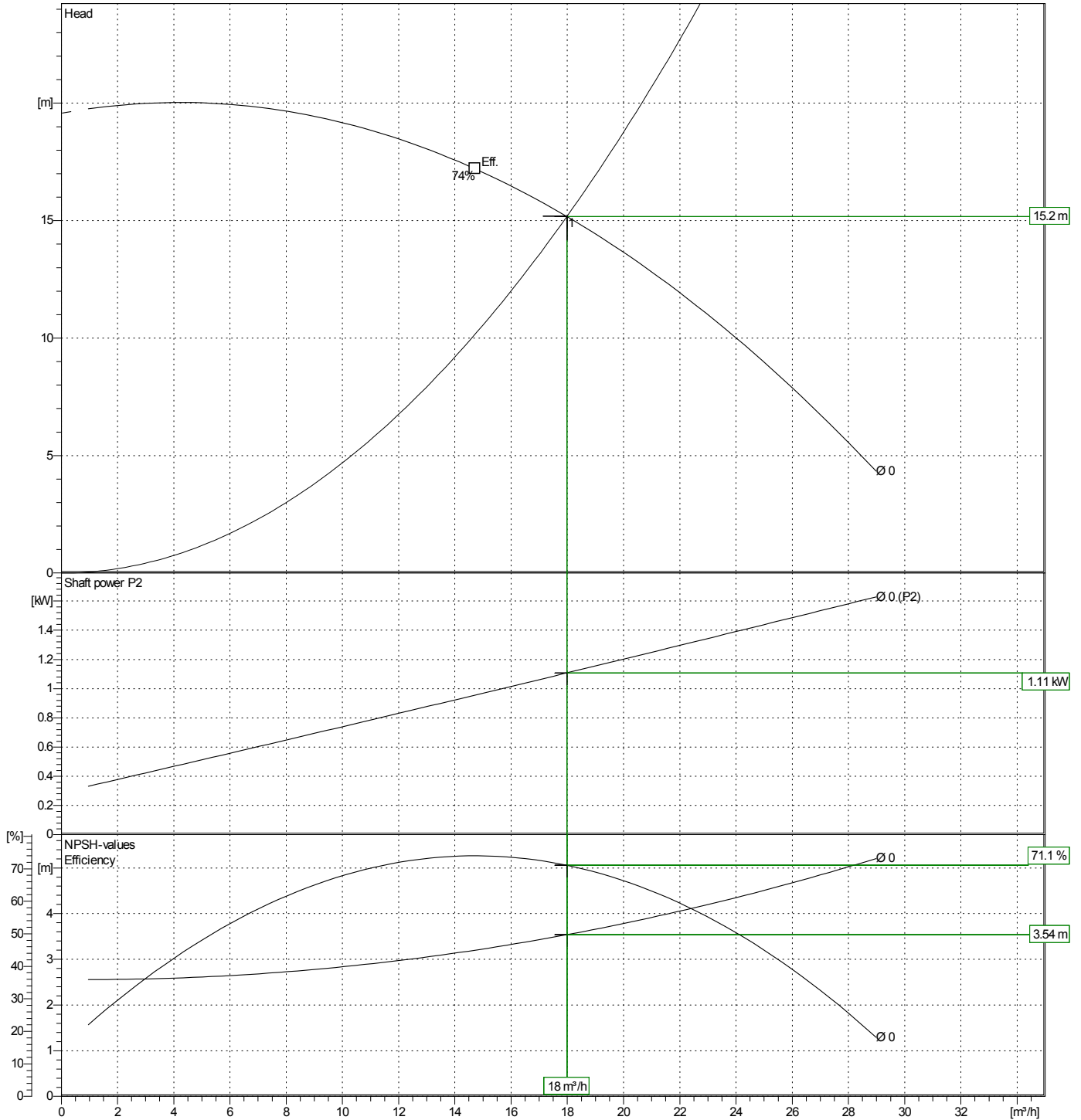
Requested data

1	Flow	m ³ /h	18
2	Head	m	15.2
3	Static head	m	0

Pump

Operating Flow	m ³ /h	18	Impeller Diameter	Designedmm	0
Operating Head	m	15.2	Frequency	Hz	50
			Speed	1/min	2900

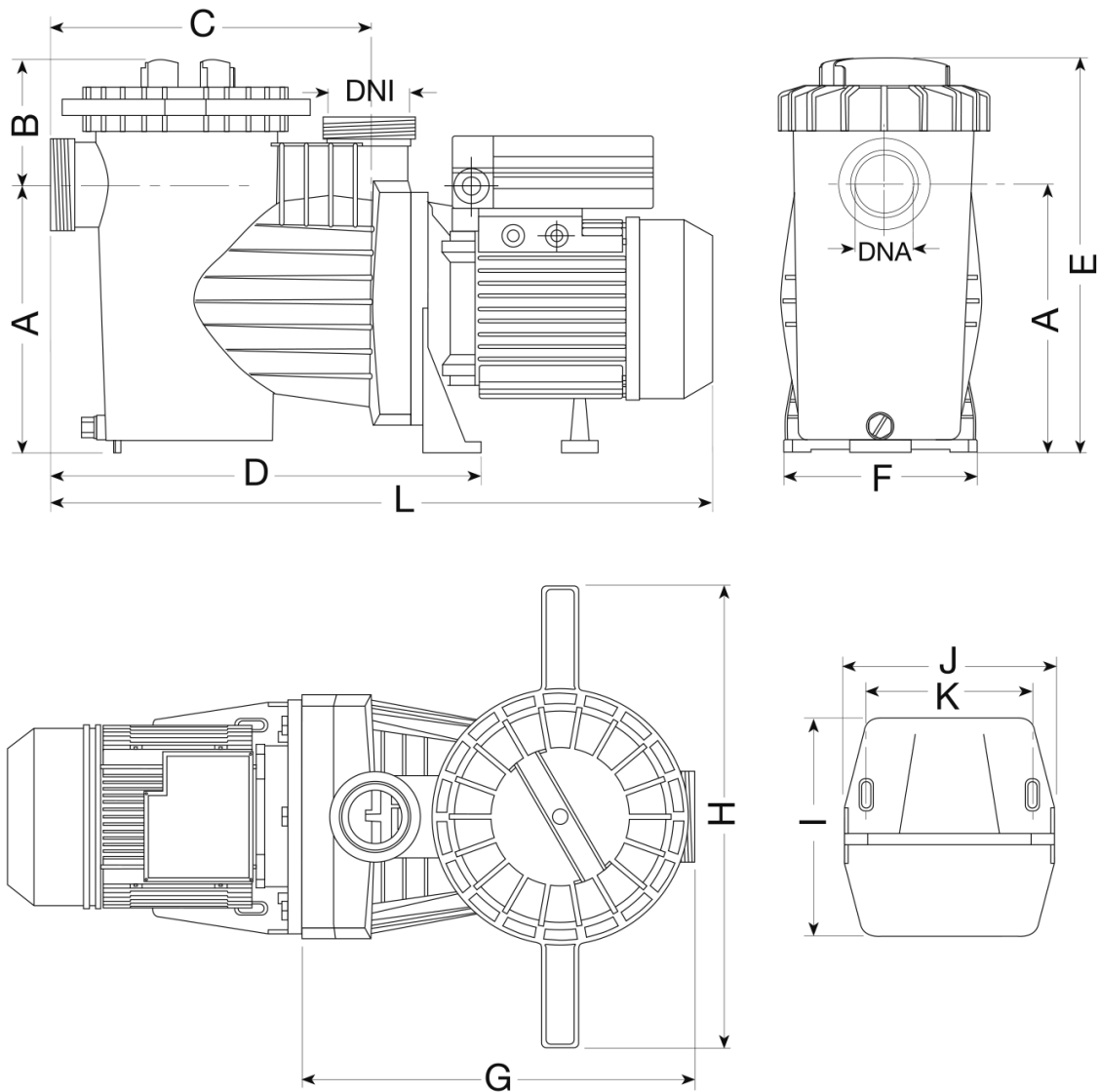
Water, clean [100%] ; 293K; 998.3kg/m³; 1mm²/s



Dimensions

Pump name **SWT 200 M**

Customer	Date 29-May-2019	Company
Contact	Item no.	Issued by
Phone	Project	Phone
E-mail	Project ID	E-mail

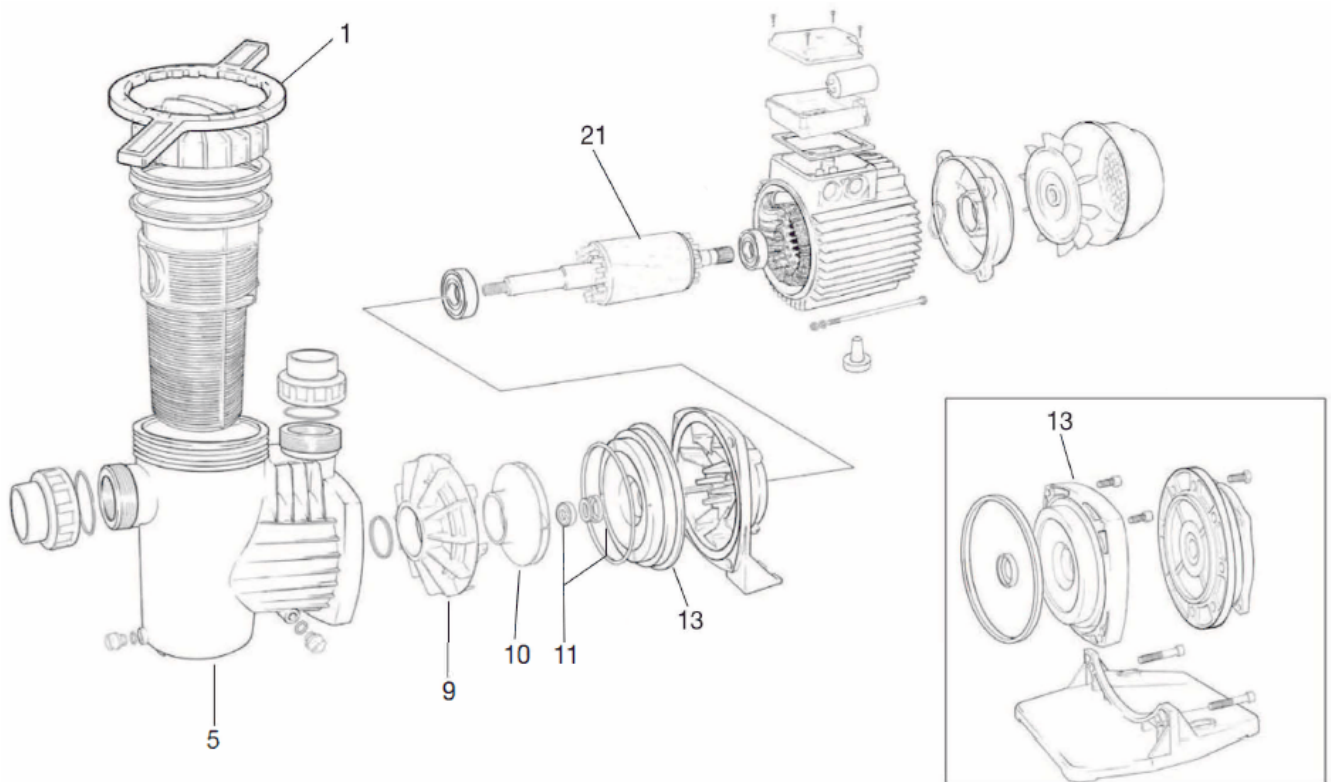


Dimensions in		mm						
1	A	216	L	580				
2	B	109	Weight P&M	17,1 kg				
3	C	265						
4	D	370						
5	DNA	2"						
6	DNI	2"						
7	E	325						
8	F	206						
9	G	325						
10	H	400						
11	I	220						
12	J	205						
13	K	160						

(1/1) Construction

Pump name SWT 200 M

Customer	Date 29-May-2019	Company
Contact	Item no.	Issued by
Phone	Project	Phone
E-mail	Project ID	E-mail



N°	PART NAME	MATERIAL
1	Key	Polypropylene reinforced with glass fibre
5	Pump body	Polypropylene reinforced with glass fibre
9	Diffuser	Polypropylene reinforced with glass fibre
10	Impeller	Noryl
11	Mechanical seal	Carbon / Ceramic / Stainless Steel AISI 316
13	Pump body lid	Polypropylene reinforced with glass fibre
21	Shaft with motor	Stainless Steel AISI 316